



Public Notice

HILARY TROTMAN LANE, P.E. | State Conservation Engineer, 732-537-6071,
hilary.trotmanlane@usda.gov

Public Meeting for Assunpink Creek Watershed Dam Sites 4, 5, 6, 18, and 19 Set for February 20th, 2025

USDA-Natural Resources Conservation Service (NRCS) is hosting a Public Meeting to discuss the preparation of a Supplemental Watershed Plan and Environmental Assessment for the Assunpink Creek Watershed Sites 4 (Assunpink Lake Dam), 5 (“Duck Pond” or Horse Creek Lake Dam), 6 (“Route 130” Dam), 18 (Rising Sun Lake Dam), and 19 (Stone Tavern Lake Dam) in the Assunpink Wildlife Management Area in Monmouth and Mercer Counties, New Jersey.

There will be two opportunities during which the public is encouraged to engage with the technical review team. The first meeting will be a hybrid in-person and virtual meeting occurring at the Assunpink Wildlife Management Area Central Region Office at 1 Eldridge Rd. Robbinsville Township, NJ 08691 and <https://parecorp.zoom.us/my/nrcs.nj> on **February 20, 2025 at 5:30 pm**. Assistance will be provided to anyone having difficulty in determining how to participate. This meeting will present the purpose and scope of the planning effort; public input is encouraged to support evaluation of formulated alternatives.

Comments or questions may be submitted until March 22, 2025 by mail to Assunpink Creek Watershed Plan EA, c/o Pare Corporation, 10 Lincoln Road Suite 210, Foxboro, MA 02035 or by email to AssunpinkCreek@parecorp.com). Additional information will be available through the project website: <https://www.nrcs.usda.gov/programs-initiatives/watershed-rehabilitation/new-jersey/watershed-rehabilitation-rehab>. Updates will be posted to the website throughout the planning process to keep interested parties informed on the project progress.

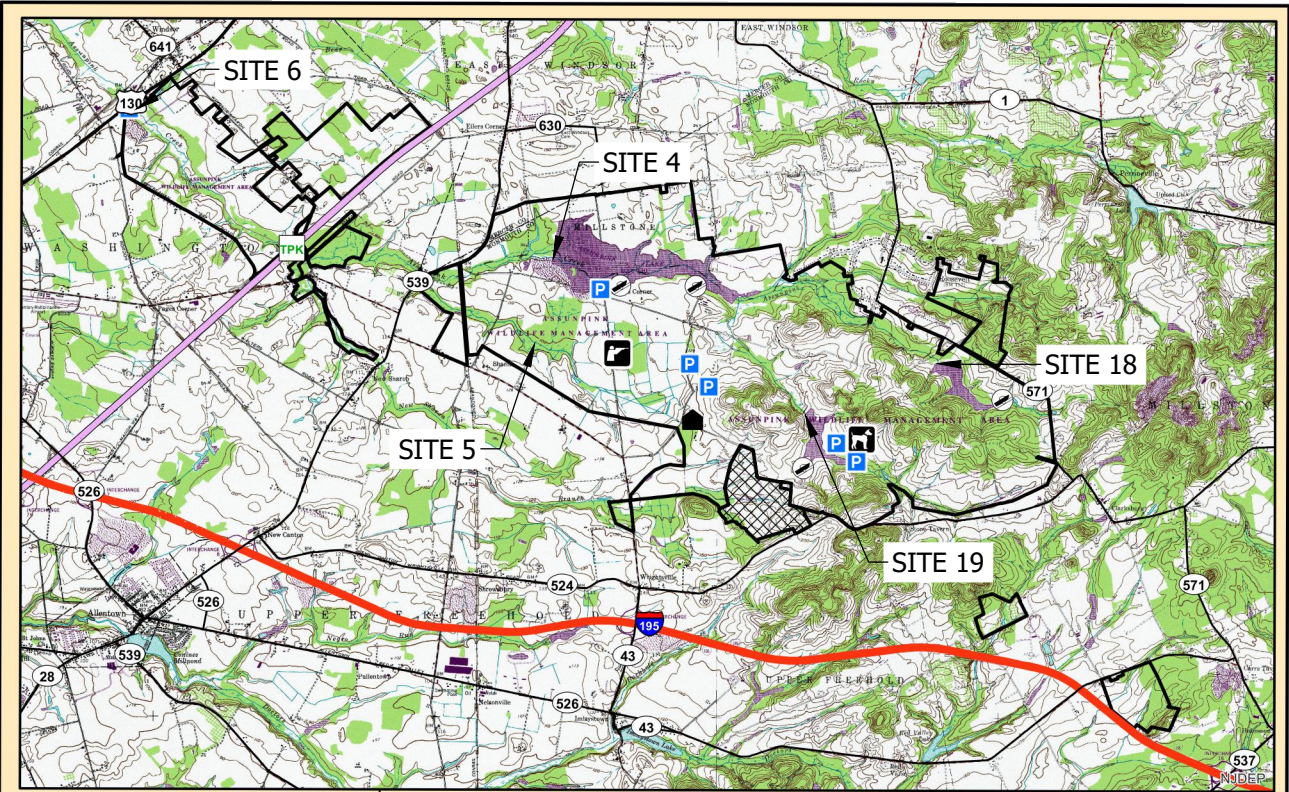
Representatives from the Local Sponsors and NRCS along with the technical consultant team will provide information on the scope of the planning activities, various alternatives being considered as part of the assessment, answer questions and concerns about the planned activities, and seek public input.

Federal funding has been received to assist the local sponsors in developing the plan but has not yet been secured for the design or construction of these projects.

NRCS provides reasonable accommodations to enable all persons with disabilities to participate in agency programs and activities. If you require special accommodations, or for further information, please contact Hilary Trotman Lane by February 6th, 2025.

###

USDA is an equal opportunity provider, employer and lender.



- WMA Boundary
- Parking
- Boat Ramp
- Dog Training Area
- Range (Shotgun)
- Office

Assumpink Wildlife Management Area
 Mercer & Monmouth Counties
 Millstone, Roosevelt, Upper Freehold
 & Washington Townships
 6393 Acres

0 0.25 0.5 1 1.5 2 Miles

NJ Department of Environmental Protection
 NJ Division of Fish & Wildlife

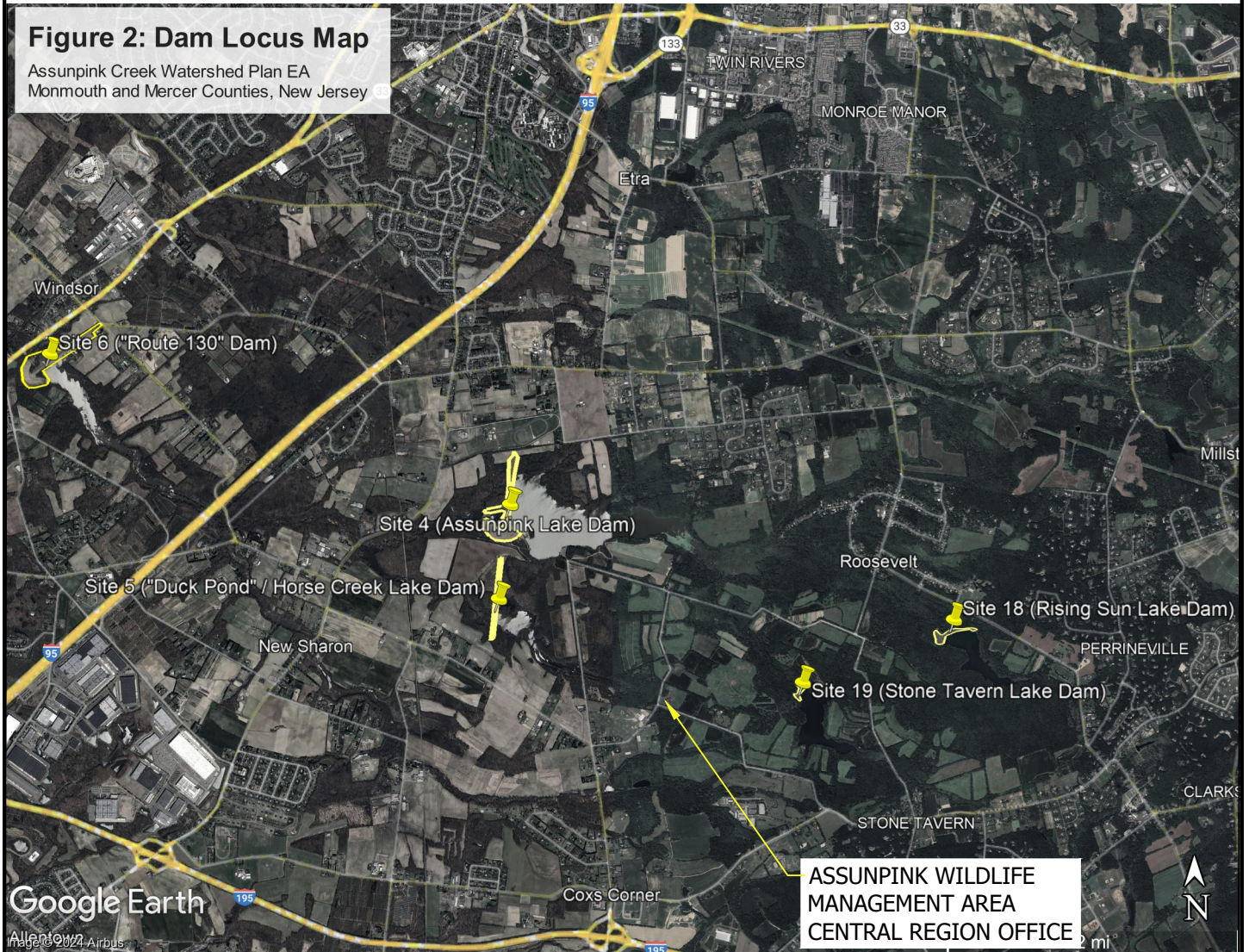


**ASSUNPINK CREEK WATERSHED
 PLAN EA
 MONMOUTH AND MERCER COUNTIES,
 NEW JERSEY**

**ASSUNPINK WILDLIFE
 MANAGEMENT AREA
 LOCUS PLAN**
 DECEMBER 2024 FIGURE 1

Figure 2: Dam Locus Map

Assunpink Creek Watershed Plan EA
Monmouth and Mercer Counties, New Jersey

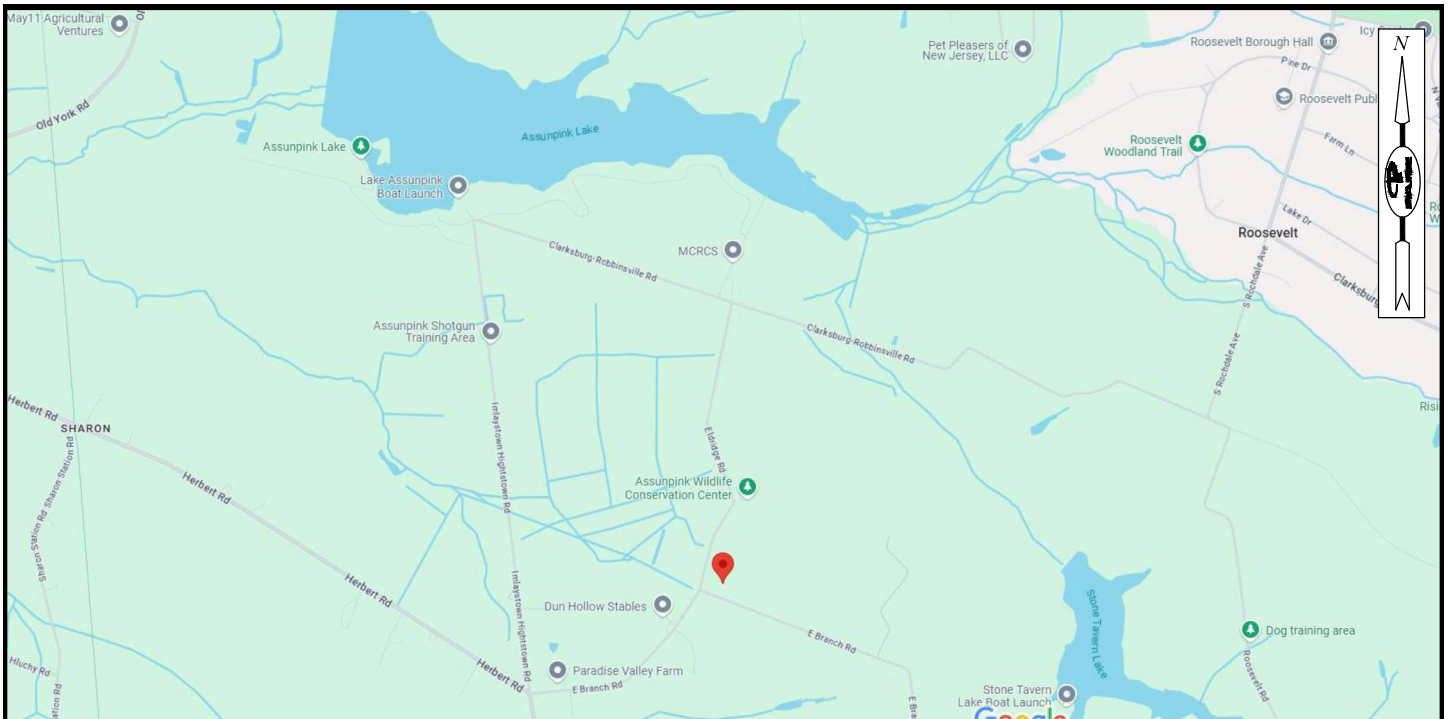


ASSUNPINK CREEK WATERSHED
PLAN EA
MONMOUTH AND MERCER COUNTIES,
NEW JERSEY

ASSUNPINK CREEK
WATERSHED DAMS
LOCUS PLAN

DECEMBER 2024

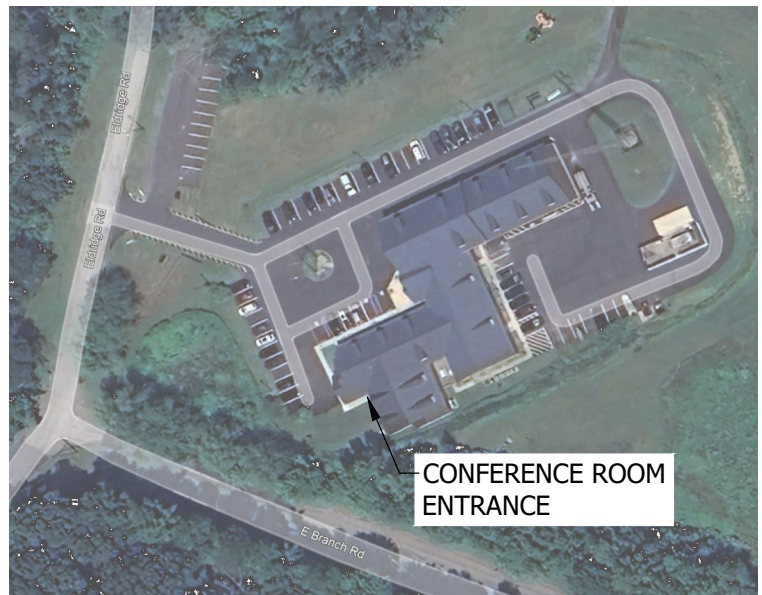
FIGURE 2



DIRECTIONS TO THE ASSUNPINK WILDLIFE MANAGEMENT AREA CENTRAL REGION OFFICE

1 ELDRIDGE RD.
ROBBINSVILLE TWP, NJ 08691

TAKE INTERSTATE 195 EAST OR WEST TO EXIT 11 (IMLAYSTOWN-COX'S CORNER). HEAD TOWARD COX'S CORNER AS YOU COME OFF THE RAMP. AT THE FIRST STOP SIGN INTERSECTION (RT. 524) GO STRAIGHT ACROSS. GO ONE MILE TO THE NEXT STOP SIGN INTERSECTION (EAST BRANCH ROAD), AND TURN RIGHT. FOLLOW THIS ROAD PAST THE HORSE FARMS, AND YOU WILL COME TO THE ASSUNPINK PROPERTY. THE CENTRAL REGION OFFICE WILL BE ON YOUR RIGHT.



PLEASE REFER TO THE FOLLOWING LINK FOR THE EXACT LOCATION:
<https://maps.app.goo.gl/qjS2AgoNk3TyVZWt9>



ASSUNPINK CREEK WATERSHED
PLAN EA
MONMOUTH AND MERCER COUNTIES,
NEW JERSEY

ASSUNPINK CREEK
WATERSHED MEETING
LOCATION PLAN

DECEMBER 2024

FIGURE 3